



**STRIP**

**B R U S H E S**



# CONFIGURATOR

## Metal Back Strip Brushes



### BACKING\*



\*Nominal size. See page 36.

### TYPES



### BACKING MATERIAL

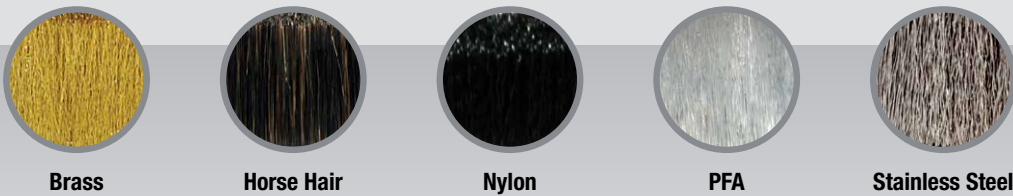


## Flexible Brushes | Rigid Brushes

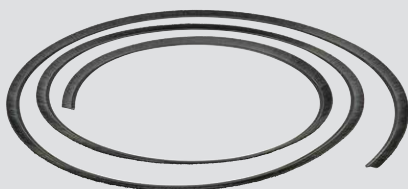
### TYPES



### FILAMENT OPTIONS



## Fuze Flex™ Strip Brush



The Fuze Flex™ is the newest technology in brush seal. Lightweight and ultra-flexible, it is ideal for contours and curves. Available in Polypropylene and Nylon.

To order a brush, visit [www.tanisbrush.com/request-quote](http://www.tanisbrush.com/request-quote) or call Customer Service at (262) 646-9000.

## Shapes and Construction

Prior to coiling the brush, a metal back strip brush is made first. Strip brushes consist of densely compressed synthetic, natural bristles or wire filaments laid down over a continuous metal channel formed into a “U” shape. A binding wire is inserted over the filament materials and forced down into the partially formed metal backing. The binding wire causes the fill material to form vertically as the metal backing forms and closes over the binding wire and filament.

### Internal Ring

An internal ring is manufactured by forming a metal back strip brush with the filament material to the inside. The ring can be sprung open to place over a shaft or split in halves or segments to be mounted over a shaft. Ideally used for cleaning the outside surfaces of plastic or metal tubing and rod or used for drum and shaft seals. In high temperature applications, wire filament is recommended.



### External Ring

External rings are metal back strip brushes wound with the filament to the outside. They are used as individual rings or mounted together to make a wide brush face. They are used in various cleaning and polishing applications.



### Formed Cup

A metal back strip brush is formed into a 360 degree circle or segments of a full circle. The backing sides can be formed vertical or at various angles. Generally used for vacuum hose seals, router enclosures for dust and particle collection on drill presses.



### Formed Strip

The metal back strip brush can be formed into irregular shapes. With a range of configurations, strip brushes can be formed into ovals, squares, rectangles, “L” and “V” shapes and compound curves. Formed to meet many shapes and applications.



### Straight Strip

The most economical and common manufacturing shape for metal back strip brushes. Brushes are used individually or mounted parallel on a flat surface for a wider brush face. Applications include window seals, door and dock leveler seals, air flow seals, cable management, engine seals, conveyor cleaning, splash curtains, machine guards, static control, transportation vehicle seals and cleaning glass.



### Coiled

Metal back strip brushes are manufactured into free or loose coils by winding them onto a mandrel or free coiling them. They can be produced as internal or external coils depending on the application and can be made with a close wound, tight coil making an extremely dense brush face or an open wound, loose coil with a lead producing less density in the brush face. Coils are manufactured to replace an existing coil on installed equipment or mounted onto a shaft or tube as a cylinder or rotary brush. Applications include conveyor cleaning, glass washing, vegetable and fruit washing, sheet metal polishing, cleaning trammel screens and used as an auger or screw to move product in a given direction.



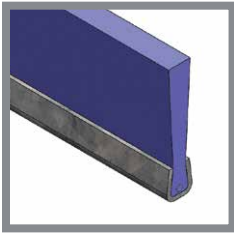
### Cylinder or Rotary

A metal back strip brush is attached and wound directly to a core, shaft or tube. The coil is wound under tension onto a core, shaft or tube for secure mounting, or free coiled and then assembled to the core. A coil can be close or open wound depending on the desired brush density. Dynamic balancing is provided, if required, to assure complete surface contact regardless of the brush size and speed of the brush. Brushes are generally used in conveyor cleaning, glass washing, vegetable and fruit washing, sheet metal polishing, cleaning trammel screens and used as an auger or screw to move product in a given direction.



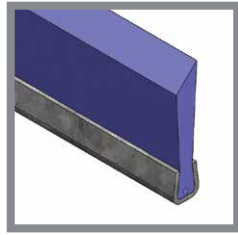


# STRIP BRUSHES



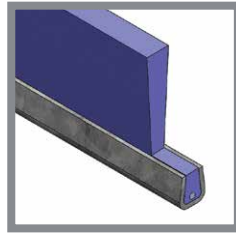
### Flat

Standard and most common trim as manufactured.



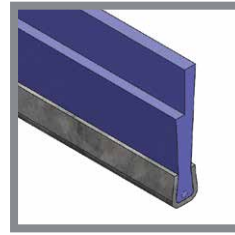
### Bevel

Reduces brush resistance and conforms to surface being brushed.



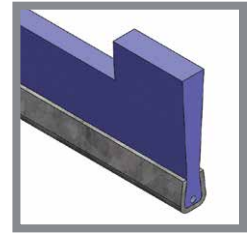
### Shaved End

Made to utilize ends of strip as holding area.



### Offset

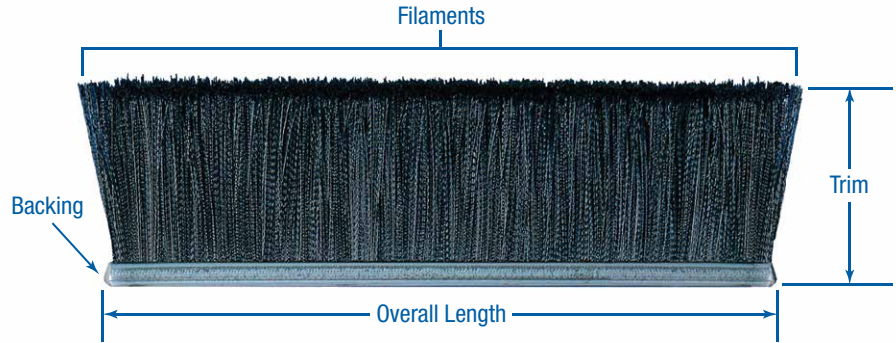
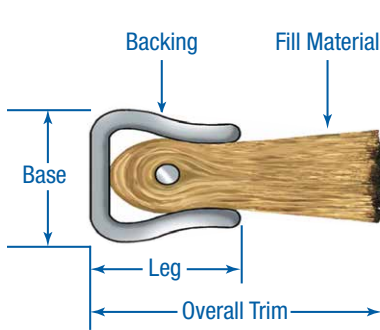
Less density at surface with back-up support.



### Stepped

Uniform brush contact for brushing irregular or uneven surfaces.

## Strip Brush Terminology



SIZE #	BACKING		STANDARD FORMED DIMENSIONS		OVERALL TRIM		SYNTHETIC FILL SIZE RANGE	WIRE FILL SIZE RANGE
	THICKNESS (IN)		BASE (IN) +/- .010	LEG (IN) +/- .015	MINIMUM (IN) +/- .032	MAXIMUM (IN) +/- .032	LEVEL OR CRIMPED (IN)	LEVEL OR CRIMPED (IN)
GALV	STST							
2	.018	.018	.098	.114	.313	6.00	.003 - .012	-
2.5	.024	.018	.125	.125	.313	6.00	.003 - .020	.003 - .010
3	.022	.018	.150	.160	.313	6.00	.003 - .024	.003 - .010
4	.030	.025	.194	.205	.375	8.00	.003 - .030	.003 - .010
5	.035	.035	.240	.250	.500	8.00	.003 - .045	-
7	.040	.040	.310	.340	.625	12.00	.003 - .120	.003 - .014
8	.048	.040	.340	.402	.875	12.00	.003 - .120	-
10	.048	.045	.440	.473	1.00	16.00	.003 - .120	.010 - .020
16	.050	.050	.625	.689	5.00	16.00	.003 - .120	-

## HOLDER OPTIONS

We offer strip brush holders for our metal back strip brushes in extruded aluminum for #2½, #3, #4, #7 and #10 backing sizes, and in formed stainless steel in #4 and #7 backing sizes. A flexible PVC holder is also available for #2½ backing size. The holders are produced with a variety of profile shapes for straight and angled mounting. The different profile shapes ensure the brush is mounted at an optimal position for maximum surface contact and effectiveness.

We stock aluminum holders with clear anodized finishes. The anodized finish provides the aluminum with a naturally protective coating, strengthening the durability and extending the life of the brush holder.

For our stapled set line, the all-in-one designs conveniently include holders, which are available in two styles: Clip Style and h-Profile. The integrated Clip Style backing makes placing and moving the brush fast and easy. The integrated h-Profile allows for quick and easy mounting without needing to purchase a separate holder. We stock flexible PVC holders in Clip Style and h-Profile to match with our new Fuze Flex™ Strip Brushes.





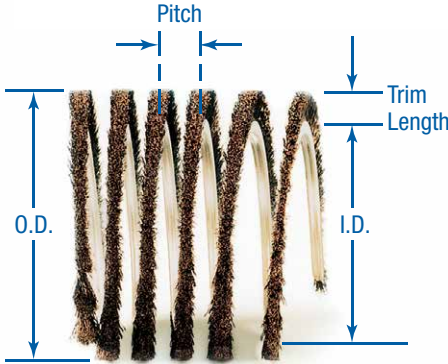
### Metal Back Strip Attachment to Core, Shaft or Tube

After the straight metal back strip brush is formed, the strip is attached to the core, shaft or tube and wound under tension to make the coil cylinder brush. We are able to wind the strip right or left handed at the desired pitch to determine the brush density. Strips can be wound in either an open wound or close wound pitch shown below.

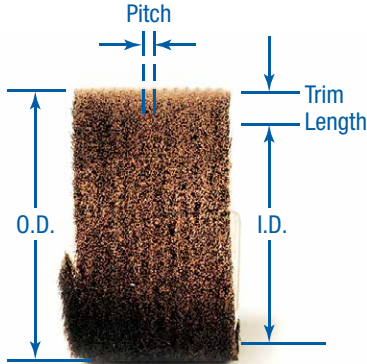
Loose or Free Coil



Assembled Coil



Open Wound Pitch for a less dense brush



Close Wound Pitch for a full brush

## ASSEMBLED COILS

A finished coil can be assembled to a core, shaft, tube, or free coiled for mounting to the customer's shaft in the field. Assembled coils can be tack welded or attached with an alligator clip to the core, shaft or tube. A larger winding pitch provides a less dense brush and conforms better to the surface being brushed. The photos above illustrate a loose or free coil and an assembled coil brush construction.



Tack Weld



Alligator Clip



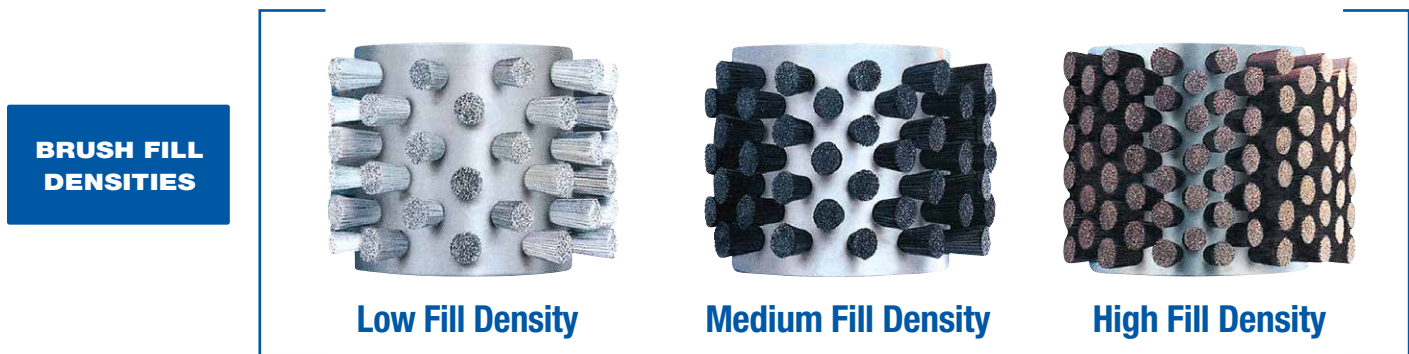
# STRIP BRUSHES

## Stapled Set Tufted Cylinder and Circular Brushes

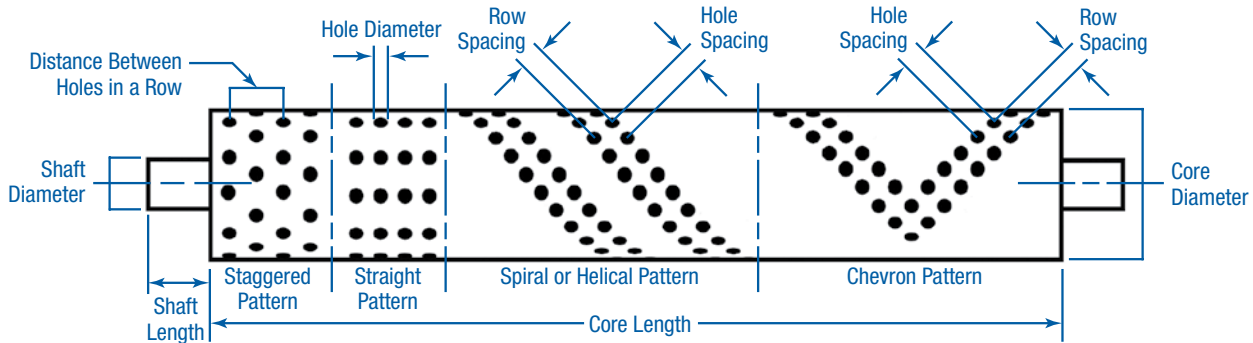
Stapled brushes consist of a series of individual tufts of fill material inserted into a bored hole in a solid block of wood or plastic. The tufts of fill material are secured to the block by a wire staple. Stapled set brushes are made with a variety of hole or tuft patterns to obtain the desired brush density and brushing effect. Hole patterns can be made with virtually any brush pattern. See the pictures below illustrating the different brush densities and hole patterns.

As with coil wound cylinder brushes, stapled set brushes can be made with similar core constructions. The plastic or wood core can be press fit to a shaft, made with collars to accept customer's shaft, made with stub ends or ends can be machined and inserted into ends of core. Steel or aluminum tubing can be press fit into the inside diameter of the tube for mounting collars and added support. Bearings can be press fit into circular brushes.

Core material is generally made of a hard wood or plastic. Most common types of plastics used are PVC, delrin, high-density polyethylene, UHMW, ABS or polypropylene.



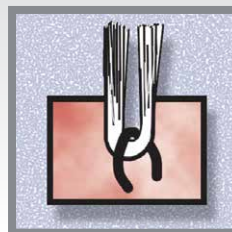
## Brush Fill Terminology



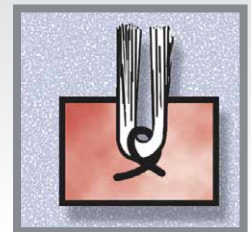
# STAPLE CONSTRUCTION

Stapling provides consistent product quality and reliability. The versatility and economy of stapling makes stapled set cylinder and circular brushes ideal for a wide variety of applications and industries. The staple, as shown in the illustrations at right, is a primary part of the brush. A staple is made either of steel, stainless steel or brass. The type of staple used is predicated by the environment and conditions the brush will be performing under.

**Straight**  
Most commonly used.  
Typical hole size of 3/32" or more.

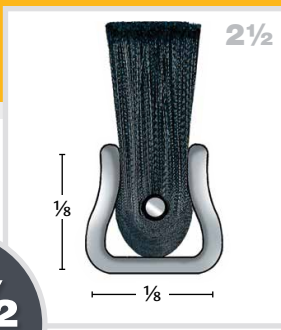


**Crossover**  
For greater tuft retention.  
Typical hole size of 3/32" or more.



#

2 1/2



Nominal size.  
See page 36.

## Nylon Fill/Galvanized Backing



TANIS PART NO.	BACKING SIZE	OVERALL TRIM	OVERALL LENGTH	FILL MATERIAL
MB250036	#2-1/2	3/4"	36"	.006 Crimped Black Nylon
MB250072	#2-1/2	3/4"	72"	.006 Crimped Black Nylon
MB250096	#2-1/2	3/4"	96"	.006 Crimped Black Nylon
MB250236	#2-1/2	1"	36"	.008 Crimped Black Nylon
MB250272	#2-1/2	1"	72"	.008 Crimped Black Nylon
MB250296	#2-1/2	1"	96"	.008 Crimped Black Nylon
MB250436	#2-1/2	2"	36"	.010 Crimped Black Nylon
MB250472	#2-1/2	2"	72"	.010 Crimped Black Nylon
MB250496	#2-1/2	2"	96"	.010 Crimped Black Nylon
MB250636	#2-1/2	3"	36"	.012 Crimped Black Nylon
MB250672	#2-1/2	3"	72"	.012 Crimped Black Nylon
MB250696	#2-1/2	3"	96"	.012 Crimped Black Nylon

Other trim lengths, overall lengths, fill material and backing sizes are available upon request.

## Nylon Fill/Stainless Steel Backing



TANIS PART NO.	BACKING SIZE	OVERALL TRIM	OVERALL LENGTH	FILL MATERIAL
MB252036	#2-1/2	3/4"	36"	.006 Crimped Black Nylon
MB252072	#2-1/2	3/4"	72"	.006 Crimped Black Nylon
MB252096	#2-1/2	3/4"	96"	.006 Crimped Black Nylon
MB252236	#2-1/2	1"	36"	.008 Crimped Black Nylon
MB252272	#2-1/2	1"	72"	.008 Crimped Black Nylon
MB252296	#2-1/2	1"	96"	.008 Crimped Black Nylon
MB252436	#2-1/2	2"	36"	.010 Crimped Black Nylon
MB252472	#2-1/2	2"	72"	.010 Crimped Black Nylon
MB252496	#2-1/2	2"	96"	.010 Crimped Black Nylon
MB252636	#2-1/2	3"	36"	.012 Crimped Black Nylon
MB252672	#2-1/2	3"	72"	.012 Crimped Black Nylon
MB252696	#2-1/2	3"	96"	.012 Crimped Black Nylon

Other trim lengths, overall lengths, fill material and backing sizes are available upon request.





# STRIP BRUSHES

## Nylon Fill/Galvanized Backing



#



Nominal size.  
See page 36.

TANIS PART NO.	BACKING SIZE	OVERALL TRIM	OVERALL LENGTH	FILL MATERIAL
MB400036	#4	1"	36"	.010 Crimped Black Nylon
MB400072	#4	1"	72"	.010 Crimped Black Nylon
MB400096	#4	1"	96"	.010 Crimped Black Nylon
MB400236	#4	2"	36"	.010 Crimped Black Nylon
MB400272	#4	2"	72"	.010 Crimped Black Nylon
MB400296	#4	2"	96"	.010 Crimped Black Nylon
MB400436	#4	2"	36"	.014 Crimped Black Nylon
MB400472	#4	2"	72"	.014 Crimped Black Nylon
MB400496	#4	2"	96"	.014 Crimped Black Nylon
MB400636	#4	3"	36"	.014 Crimped Black Nylon
MB400672	#4	3"	72"	.014 Crimped Black Nylon
MB400696	#4	3"	96"	.014 Crimped Black Nylon
MB400836	#4	4"	36"	.014 Crimped Black Nylon
MB400872	#4	4"	72"	.014 Crimped Black Nylon
MB400896	#4	4"	96"	.014 Crimped Black Nylon
MB401036	#4	6"	36"	.014 Crimped Black Nylon
MB401072	#4	6"	72"	.014 Crimped Black Nylon
MB401096	#4	6"	96"	.014 Crimped Black Nylon

Other trim lengths, overall lengths, fill material and backing sizes are available upon request.

## Nylon Fill/Stainless Steel Backing



TANIS PART NO.	BACKING SIZE	OVERALL TRIM	OVERALL LENGTH	FILL MATERIAL
MB402036	#4	1"	36"	.010 Crimped Black Nylon
MB402072	#4	1"	72"	.010 Crimped Black Nylon
MB402096	#4	1"	96"	.010 Crimped Black Nylon
MB402436	#4	2"	36"	.014 Crimped Black Nylon
MB402472	#4	2"	72"	.014 Crimped Black Nylon
MB402496	#4	2"	96"	.014 Crimped Black Nylon
MB402636	#4	3"	36"	.014 Crimped Black Nylon
MB402672	#4	3"	72"	.014 Crimped Black Nylon
MB402696	#4	3"	96"	.014 Crimped Black Nylon
MB402836	#4	4"	36"	.014 Crimped Black Nylon
MB402872	#4	4"	72"	.014 Crimped Black Nylon
MB402896	#4	4"	96"	.014 Crimped Black Nylon
MB403036	#4	6"	36"	.014 Crimped Black Nylon
MB403072	#4	6"	72"	.014 Crimped Black Nylon
MB403096	#4	6"	96"	.014 Crimped Black Nylon

Other trim lengths, overall lengths, fill material and backing sizes are available upon request.



#



Nominal size.  
See page 36.

## Nylon Fill/Galvanized Backing



TANIS PART NO.	BACKING SIZE	OVERALL TRIM	OVERALL LENGTH	FILL MATERIAL
MB700036	#7	1"	36"	.010 Crimped Black Nylon
MB700072	#7	1"	72"	.010 Crimped Black Nylon
MB700096	#7	1"	96"	.010 Crimped Black Nylon
MB700236	#7	2"	36"	.014 Crimped Black Nylon
MB700272	#7	2"	72"	.014 Crimped Black Nylon
MB700296	#7	2"	96"	.014 Crimped Black Nylon
MB700436	#7	2"	36"	.020 Crimped Black Nylon
MB700472	#7	2"	72"	.020 Crimped Black Nylon
MB700496	#7	2"	96"	.020 Crimped Black Nylon
MB700636	#7	3"	36"	.014 Crimped Black Nylon
MB700672	#7	3"	72"	.014 Crimped Black Nylon
MB700696	#7	3"	96"	.014 Crimped Black Nylon
MB700836	#7	3"	36"	.020 Crimped Black Nylon
MB700872	#7	3"	72"	.020 Crimped Black Nylon
MB700896	#7	3"	96"	.020 Crimped Black Nylon
MB701036	#7	3"	36"	.030 Crimped Black Nylon
MB701072	#7	3"	72"	.030 Crimped Black Nylon
MB701096	#7	3"	96"	.030 Crimped Black Nylon
MB701236	#7	4"	36"	.020 Crimped Black Nylon
MB701272	#7	4"	72"	.030 Crimped Black Nylon
MB701296	#7	4"	96"	.020 Crimped Black Nylon
MB701436	#7	4"	36"	.030 Crimped Black Nylon
MB701472	#7	4"	72"	.030 Crimped Black Nylon
MB701496	#7	4"	96"	.030 Crimped Black Nylon
MB701636	#7	6"	36"	.020 Crimped Black Nylon
MB701672	#7	6"	72"	.020 Crimped Black Nylon
MB701696	#7	6"	96"	.020 Crimped Black Nylon
MB701736	#7	6"	36"	.045 Crimped Black Nylon
MB701772	#7	6"	72"	.045 Crimped Black Nylon
MB701796	#7	6"	96"	.045 Crimped Black Nylon
MB701836	#7	8"	36"	.045 Crimped Black Nylon
MB701872	#7	8"	72"	.045 Crimped Black Nylon
MB701896	#7	8"	96"	.045 Crimped Black Nylon
MB701936	#7	10"	36"	.045 Crimped Black Nylon
MB701972	#7	10"	72"	.045 Crimped Black Nylon
MB701996	#7	10"	96"	.045 Crimped Black Nylon

Other trim lengths, overall lengths, fill material and backing sizes are available upon request.



# STRIP BRUSHES

## Nylon Fill/Stainless Steel Backing



Nominal size.  
See page 36.

TANIS PART NO.	BACKING SIZE	OVERALL TRIM	OVERALL LENGTH	FILL MATERIAL
MB702036	#7	1"	36"	.010 Crimped Black Nylon
MB702072	#7	1"	72"	.010 Crimped Black Nylon
MB702096	#7	1"	96"	.010 Crimped Black Nylon
MB702236	#7	2"	36"	.014 Crimped Black Nylon
MB702272	#7	2"	72"	.014 Crimped Black Nylon
MB702296	#7	2"	96"	.014 Crimped Black Nylon
MB702436	#7	2"	36"	.020 Crimped Black Nylon
MB702472	#7	2"	72"	.020 Crimped Black Nylon
MB702496	#7	2"	96"	.020 Crimped Black Nylon
MB702636	#7	3"	36"	.014 Crimped Black Nylon
MB702672	#7	3"	72"	.014 Crimped Black Nylon
MB702696	#7	3"	96"	.014 Crimped Black Nylon
MB702836	#7	3"	36"	.020 Crimped Black Nylon
MB702872	#7	3"	72"	.020 Crimped Black Nylon
MB702896	#7	3"	96"	.020 Crimped Black Nylon
MB703036	#7	3"	36"	.030 Crimped Black Nylon
MB703072	#7	3"	72"	.030 Crimped Black Nylon
MB703096	#7	3"	96"	.030 Crimped Black Nylon
MB703236	#7	4"	36"	.020 Crimped Black Nylon
MB703272	#7	4"	72"	.020 Crimped Black Nylon
MB703296	#7	4"	96"	.020 Crimped Black Nylon
MB703436	#7	4"	36"	.030 Crimped Black Nylon
MB703472	#7	4"	72"	.030 Crimped Black Nylon
MB703496	#7	4"	96"	.030 Crimped Black Nylon
MB703636	#7	6"	36"	.020 Crimped Black Nylon
MB703672	#7	6"	72"	.020 Crimped Black Nylon
MB703696	#7	6"	96"	.020 Crimped Black Nylon
MB703736	#7	6"	36"	.045 Crimped Black Nylon
MB703772	#7	6"	72"	.045 Crimped Black Nylon
MB703796	#7	6"	96"	.045 Crimped Black Nylon
MB703836	#7	8"	36"	.045 Crimped Black Nylon
MB703872	#7	8"	72"	.045 Crimped Black Nylon
MB703896	#7	8"	96"	.045 Crimped Black Nylon
MB703936	#7	10"	36"	.045 Crimped Black Nylon
MB703972	#7	10"	72"	.045 Crimped Black Nylon
MB703996	#7	10"	96"	.045 Crimped Black Nylon

Other trim lengths, overall lengths, fill material and backing sizes are available upon request.

#

10



Nominal size.  
See page 36.

## Nylon Fill/Galvanized Backing



TANIS PART NO.	BACKING SIZE	OVERALL TRIM	OVERALL LENGTH	FILL MATERIAL
MB100036	#10	2"	36"	.014 Crimped Black Nylon
MB100072	#10	2"	72"	.014 Crimped Black Nylon
MB100096	#10	2"	96"	.014 Crimped Black Nylon
MB100236	#10	3"	36"	.020 Crimped Black Nylon
MB100272	#10	3"	72"	.020 Crimped Black Nylon
MB100296	#10	3"	96"	.020 Crimped Black Nylon
MB100436	#10	4"	36"	.020 Crimped Black Nylon
MB100472	#10	4"	72"	.020 Crimped Black Nylon
MB100496	#10	4"	96"	.020 Crimped Black Nylon
MB100636	#10	5"	36"	.030 Crimped Black Nylon
MB100672	#10	5"	72"	.030 Crimped Black Nylon
MB100696	#10	5"	96"	.030 Crimped Black Nylon
MB100836	#10	6"	36"	.045 Crimped Black Nylon
MB100872	#10	6"	72"	.045 Crimped Black Nylon
MB100896	#10	6"	96"	.045 Crimped Black Nylon
MB101036	#10	8"	36"	.045 Crimped Black Nylon
MB101072	#10	8"	72"	.045 Crimped Black Nylon
MB101096	#10	8"	96"	.045 Crimped Black Nylon
MB101236	#10	10"	36"	.045 Crimped Black Nylon
MB101272	#10	10"	72"	.045 Crimped Black Nylon
MB101296	#10	10"	96"	.045 Crimped Black Nylon

Other trim lengths, overall lengths, fill material and backing sizes are available upon request.



# STRIP BRUSHES

## Horse Hair Fill/Galvanized Backing



# **4**



Nominal size.  
See page 36.

# **7**

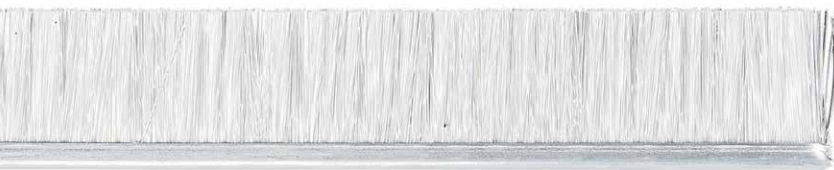


Nominal size.  
See page 36.

TANIS PART NO.	BACKING SIZE	OVERALL TRIM	OVERALL LENGTH	FILL MATERIAL
MB409036-BG	#4	1"	36"	Horse Hair
MB409072-BG	#4	1"	72"	Horse Hair
MB409096-BG	#4	1"	96"	Horse Hair
MB409236-BG	#4	2"	36"	Horse Hair
MB409272-BG	#4	2"	72"	Horse Hair
MB409296-BG	#4	2"	96"	Horse Hair
MB409436-BG	#4	3"	36"	Horse Hair
MB409472-BG	#4	3"	72"	Horse Hair
MB409496-BG	#4	3"	96"	Horse Hair
MB709036-BG	#7	1"	36"	Horse Hair
MB709072-BG	#7	1"	72"	Horse Hair
MB709096-BG	#7	1"	96"	Horse Hair
MB709236-BG	#7	2"	36"	Horse Hair
MB709272-BG	#7	2"	72"	Horse Hair
MB709296-BG	#7	2"	96"	Horse Hair
MB709436-BG	#7	3"	36"	Horse Hair
MB709472-BG	#7	3"	72"	Horse Hair
MB709496-BG	#7	3"	96"	Horse Hair

Other trim lengths, overall lengths, fill material and backing sizes are available upon request.

## PFA Fill/Galvanized Backing



# **7**



Nominal size.  
See page 36.

TANIS PART NO.	BACKING SIZE	OVERALL TRIM	OVERALL LENGTH	FILL MATERIAL
MB710036	#7	1"	36"	.035 PFA
MB710072	#7	1"	72"	.035 PFA
MB710096	#7	1"	96"	.035 PFA
MB710236	#7	2"	36"	.035 PFA
MB710272	#7	2"	72"	.035 PFA
MB710296	#7	2"	96"	.035 PFA
MB710436	#7	3"	36"	.035 PFA
MB710472	#7	3"	72"	.035 PFA
MB710496	#7	3"	96"	.035 PFA



# **4**



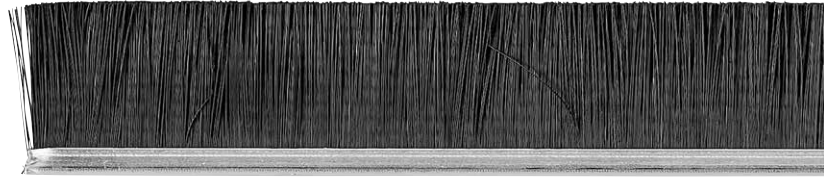
Nominal size.  
See page 36.

# **7**



Nominal size.  
See page 36.

## Antistatic Nylon/ Galvanized Backing



TANIS PART NO.	BACKING SIZE	OVERALL TRIM	OVERALL LENGTH	FILL MATERIAL
MB440236	#4	1"	36"	.008 Level Black Anti-Static Nylon
MB440272	#4	1"	72"	.008 Level Black Anti-Static Nylon
MB440296	#4	1"	96"	.008 Level Black Anti-Static Nylon
MB440436	#4	2"	36"	.012 Level Black Anti-Static Nylon
MB440472	#4	2"	72"	.012 Level Black Anti-Static Nylon
MB440496	#4	2"	96"	.012 Level Black Anti-Static Nylon
MB440636	#4	3"	36"	.020 Level Black Anti-Static Nylon
MB440672	#4	3"	72"	.020 Level Black Anti-Static Nylon
MB440696	#4	3"	96"	.020 Level Black Anti-Static Nylon
MB740236	#7	1"	36"	.008 Level Black Anti-Static Nylon
MB740272	#7	1"	72"	.008 Level Black Anti-Static Nylon
MB740296	#7	1"	96"	.008 Level Black Anti-Static Nylon
MB740436	#7	2"	36"	.012 Level Black Anti-Static Nylon
MB740472	#7	2"	72"	.012 Level Black Anti-Static Nylon
MB740496	#7	2"	96"	.012 Level Black Anti-Static Nylon
MB740636	#7	3"	36"	.020 Level Black Anti-Static Nylon
MB740672	#7	3"	72"	.020 Level Black Anti-Static Nylon
MB740696	#7	3"	96"	.020 Level Black Anti-Static Nylon

Other trim lengths, overall lengths, fill material and backing sizes are available upon request.



# STRIP BRUSHES

## Natural Polyester/ Stainless Steel Backing



Nominal size.  
See page 36.



Nominal size.  
See page 36.

## Food Grade Brushes

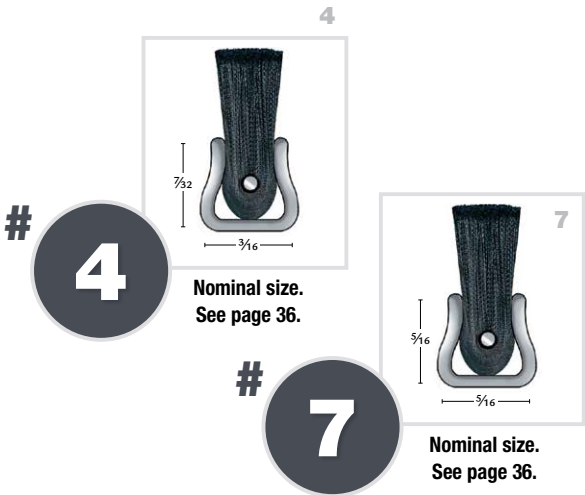
TANIS PART NO.	BACKING SIZE	OVERALL TRIM	OVERALL LENGTH	FILL MATERIAL
MB460236	#4	1"	36"	.008 Crimped Natural Polyester
MB460272	#4	1"	72"	.008 Crimped Natural Polyester
MB460296	#4	1"	96"	.008 Crimped Natural Polyester
MB460436	#4	2"	36"	.012 Crimped Natural Polyester
MB460472	#4	2"	72"	.012 Crimped Natural Polyester
MB460496	#4	2"	96"	.012 Crimped Natural Polyester
MB460636	#4	3"	36"	.020 Crimped Natural Polyester
MB460672	#4	3"	72"	.020 Crimped Natural Polyester
MB460696	#4	3"	96"	.020 Crimped Natural Polyester
MB760236	#7	1"	36"	.008 Crimped Natural Polyester
MB760272	#7	1"	72"	.008 Crimped Natural Polyester
MB760296	#7	1"	96"	.008 Crimped Natural Polyester
MB760436	#7	2"	36"	.012 Crimped Natural Polyester
MB760472	#7	2"	72"	.012 Crimped Natural Polyester
MB760496	#7	2"	96"	.012 Crimped Natural Polyester
MB760636	#7	3"	36"	.020 Crimped Natural Polyester
MB760672	#7	3"	72"	.020 Crimped Natural Polyester
MB760696	#7	3"	96"	.020 Crimped Natural Polyester

Other trim lengths, overall lengths, fill material and backing sizes are available upon request.



**Tanis offers flame retardant filament in our strip brushes. Give us a call for more information.**

**UL94 VO Rated/  
Galvanized Backing**



**Inserted Membrane/  
Galvanized Backing**



TANIS PART NO.	BACKING SIZE	OVERALL TRIM	OVERALL LENGTH	FILL MATERIAL
MB420096	#4	2"	96"	.014 Level Black Nylon
MB421096	#4	3"	96"	.014 Level Black Nylon
MB720096	#7	2"	96"	.014 Level Black Nylon
MB721096	#7	3"	96"	.014 Level Black Nylon

Other trim lengths, overall lengths, fill material and backing sizes are available upon request. Stainless steel backing is also available.

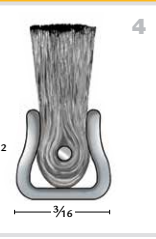


**Tanis' Inserted Membrane strip brush creates a barrier, preventing fluids, air flow, and any unwanted substances from passing through.**

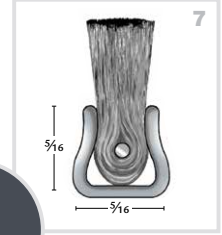


# STRIP BRUSHES

## Stainless Steel Fill/ Stainless Steel Backing



Nominal size.  
See page 36.



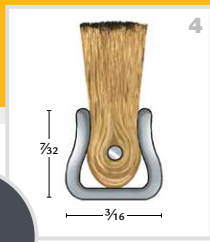
Nominal size.  
See page 36.

TANIS PART NO.	BACKING SIZE	OVERALL TRIM	OVERALL LENGTH	FILL MATERIAL
MB404036	#4	1"	36"	.004 Crimped Stainless Steel
MB404072	#4	1"	72"	.004 Crimped Stainless Steel
MB404096	#4	1"	96"	.004 Crimped Stainless Steel
MB404236	#4	2"	36"	.006 Crimped Stainless Steel
MB404272	#4	2"	72"	.006 Crimped Stainless Steel
MB404296	#4	2"	96"	.006 Crimped Stainless Steel
MB404436	#4	3"	36"	.008 Crimped Stainless Steel
MB404472	#4	3"	72"	.008 Crimped Stainless Steel
MB404496	#4	3"	96"	.008 Crimped Stainless Steel
MB404636	#4	4"	36"	.006 Crimped Stainless Steel
MB404672	#4	4"	72"	.006 Crimped Stainless Steel
MB404696	#4	4"	96"	.006 Crimped Stainless Steel
MB404836	#4	6"	36"	.008 Crimped Stainless Steel
MB404872	#4	6"	72"	.008 Crimped Stainless Steel
MB404896	#4	6"	96"	.008 Crimped Stainless Steel
MB704036	#7	1"	36"	.006 Crimped Stainless Steel
MB704072	#7	1"	72"	.006 Crimped Stainless Steel
MB704096	#7	1"	96"	.006 Crimped Stainless Steel
MB704236	#7	2"	36"	.010 Crimped Stainless Steel
MB704272	#7	2"	72"	.010 Crimped Stainless Steel
MB704296	#7	2"	96"	.010 Crimped Stainless Steel
MB704436	#7	3"	36"	.014 Crimped Stainless Steel
MB704472	#7	3"	72"	.014 Crimped Stainless Steel
MB704496	#7	3"	96"	.014 Crimped Stainless Steel
MB704636	#7	4"	36"	.010 Crimped Stainless Steel
MB704672	#7	4"	72"	.010 Crimped Stainless Steel
MB704696	#7	4"	96"	.010 Crimped Stainless Steel
MB704836	#7	6"	36"	.014 Crimped Stainless Steel
MB704872	#7	6"	72"	.014 Crimped Stainless Steel
MB704896	#7	6"	96"	.014 Crimped Stainless Steel

Other trim lengths, overall lengths, fill material and backing sizes are available upon request.

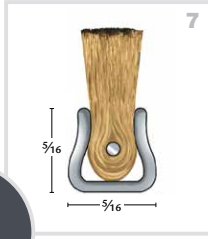


#  
**4**



Nominal size.  
See page 36.

#  
**7**



Nominal size.  
See page 36.

## Crimped Brass Fill/ Stainless Steel Backing



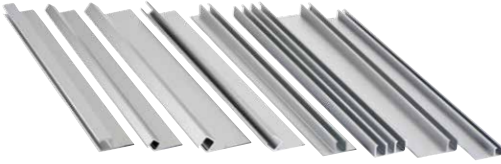
TANIS PART NO.	BACKING SIZE	OVERALL TRIM	OVERALL LENGTH	FILL MATERIAL
MB406036	#4	1"	36"	.004 Crimped Brass
MB406072	#4	1"	72"	.004 Crimped Brass
MB406096	#4	1"	96"	.004 Crimped Brass
MB406236	#4	2"	36"	.006 Crimped Brass
MB406272	#4	2"	72"	.006 Crimped Brass
MB406296	#4	2"	96"	.006 Crimped Brass
MB406436	#4	3"	36"	.008 Crimped Brass
MB406472	#4	3"	72"	.008 Crimped Brass
MB406496	#4	3"	96"	.008 Crimped Brass
MB406636	#4	4"	36"	.006 Crimped Brass
MB406672	#4	4"	72"	.006 Crimped Brass
MB406696	#4	4"	96"	.006 Crimped Brass
MB406836	#4	6"	36"	.008 Crimped Brass
MB406872	#4	6"	72"	.008 Crimped Brass
MB406896	#4	6"	96"	.008 Crimped Brass
MB706036	#7	1"	36"	.006 Crimped Brass
MB706072	#7	1"	72"	.006 Crimped Brass
MB706096	#7	1"	96"	.006 Crimped Brass
MB706236	#7	2"	36"	.008 Crimped Brass
MB706272	#7	2"	72"	.008 Crimped Brass
MB706296	#7	2"	96"	.008 Crimped Brass
MB706436	#7	3"	36"	.010 Crimped Brass
MB706472	#7	3"	72"	.010 Crimped Brass
MB706496	#7	3"	96"	.010 Crimped Brass
MB706636	#7	4"	36"	.008 Crimped Brass
MB706672	#7	4"	72"	.008 Crimped Brass
MB706696	#7	4"	96"	.008 Crimped Brass
MB706836	#7	6"	36"	.014 Crimped Brass
MB706872	#7	6"	72"	.014 Crimped Brass
MB706896	#7	6"	96"	.014 Crimped Brass

Other trim lengths, overall lengths, fill material and backing sizes are available upon request.



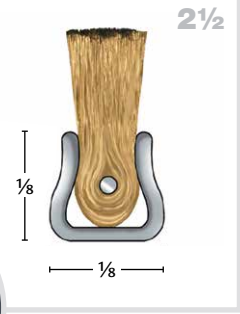
# STRIP BRUSHES

## Extruded Aluminum and Flexible PVC



Nominal size.  
See page 36.

#



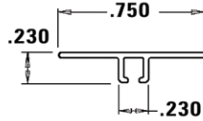
METAL BACK  
STRIP BRUSH  
HOLDERS

**CF** CLEAR ANODIZED FINISH **IN STOCK**

TANIS PART NO.	OVERALL LENGTH
AH250212	12"
AH250224	24"
AH250236	36"
AH250248	48"
AH250260	60"
AH250272	72"
AH250284	84"
AH250296	96"

ALUMINUM

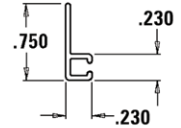
**CF**



TANIS PART NO.	OVERALL LENGTH
AH250812	12"
AH250824	24"
AH250836	36"
AH250848	48"
AH250860	60"
AH250872	72"
AH250884	84"
AH250896	96"

ALUMINUM

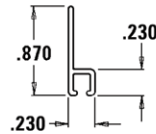
**CF**



AH250412	12"
AH250424	24"
AH250436	36"
AH250448	48"
AH250460	60"
AH250472	72"
AH250484	84"
AH250496	96"

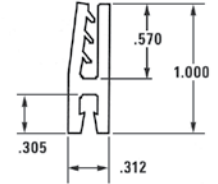
ALUMINUM

**CF**



FPH250012	12"
FPH250024	24"
FPH250036	36"
FPH250048	48"
FPH250060	60"
FPH250072	72"
FPH250084	84"
FPH250096	96"

FLEXIBLE RUBBER

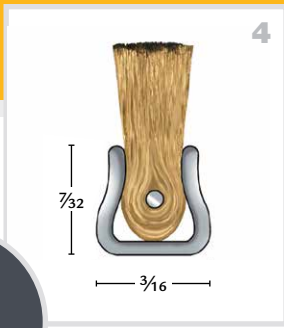


#2-1/2 aluminum holders have a thickness of .040"

#

**4**

Nominal size.  
See page 36.



METAL BACK  
STRIP BRUSH  
HOLDERS

## Extruded Aluminum and Stainless Steel

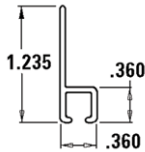


**CF** CLEAR ANODIZED FINISH **IN STOCK**

TANIS PART NO.	OVERALL LENGTH
AH400412	12"
AH400424	24"
AH400436	36"
AH400448	48"
AH400460	60"
AH400472	72"
AH400484	84"
AH400496	96"

ALUMINUM

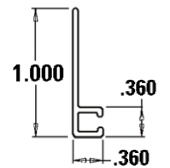
**CF**



TANIS PART NO.	OVERALL LENGTH
AH402412	12"
AH402424	24"
AH402436	36"
AH402448	48"
AH402460	60"
AH402472	72"
AH402484	84"
AH402496	96"

ALUMINUM

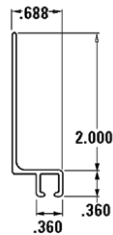
**CF**



AH400812	12"
AH400824	24"
AH400836	36"
AH400848	48"
AH400860	60"
AH400872	72"
AH400884	84"
AH400896	96"

ALUMINUM

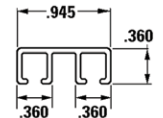
**CF**



AH403212	12"
AH403224	24"
AH403236	36"
AH403248	48"
AH403260	60"
AH403272	72"
AH403284	84"
AH403296	96"

ALUMINUM

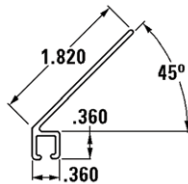
**CF**



AH401212	12"
AH401224	24"
AH401236	36"
AH401248	48"
AH401260	60"
AH401272	72"
AH401284	84"
AH401296	96"

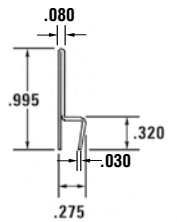
ALUMINUM

**CF**



TANIS PART NO.	OVERALL LENGTH
STH400012	12"
STH400024	24"
STH400036	36"
STH400048	48"
STH400060	60"
STH400072	72"
STH400084	84"
STH400096	96"

STAINLESS STEEL

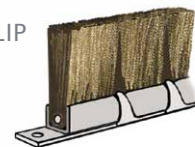


#4 aluminum holders have a thickness of .050"

**Mounting holes and slots  
can be machined into holders.**

STEEL ALLIGATOR CLIP

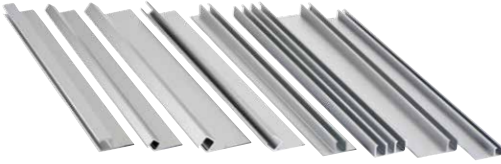
TANIS PART NO.
AC4050



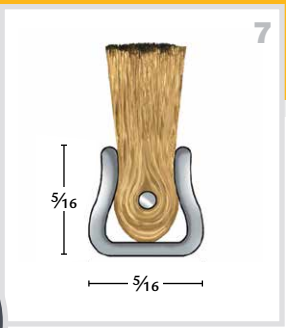


# STRIP BRUSHES

## Extruded Aluminum and Stainless Steel



Nominal size.  
See page 36.



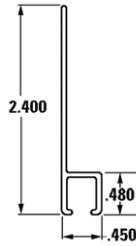
METAL BACK  
STRIP BRUSH  
HOLDERS

**CF** CLEAR ANODIZED FINISH **IN STOCK**

TANIS PART NO.	OVERALL LENGTH
AH700012	12"
AH700024	24"
AH700036	36"
AH700048	48"
AH700060	60"
AH700072	72"
AH700084	84"
AH700096	96"

ALUMINUM

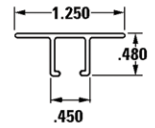
**CF**



TANIS PART NO.	OVERALL LENGTH
AH702012	12"
AH702024	24"
AH702036	36"
AH702048	48"
AH702060	60"
AH702072	72"
AH702084	84"
AH702096	96"

ALUMINUM

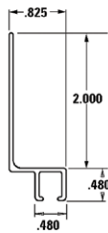
**CF**



TANIS PART NO.	OVERALL LENGTH
AH700412	12"
AH700424	24"
AH700436	36"
AH700448	48"
AH700460	60"
AH700472	72"
AH700484	84"
AH700496	96"

ALUMINUM

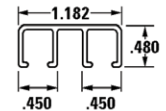
**CF**



TANIS PART NO.	OVERALL LENGTH
AH702412	12"
AH702424	24"
AH702436	36"
AH702448	48"
AH702460	60"
AH702472	72"
AH702484	84"
AH702496	96"

ALUMINUM

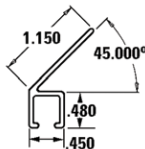
**CF**



TANIS PART NO.	OVERALL LENGTH
AH700812	12"
AH700824	24"
AH700836	36"
AH700848	48"
AH700860	60"
AH700872	72"
AH700884	84"
AH700896	96"

ALUMINUM

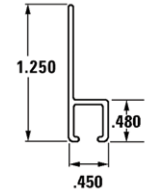
**CF**



TANIS PART NO.	OVERALL LENGTH
AH702812	12"
AH702824	24"
AH702836	36"
AH702848	48"
AH702860	60"
AH702872	72"
AH702884	84"
AH702896	96"

ALUMINUM

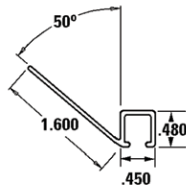
**CF**



TANIS PART NO.	OVERALL LENGTH
AH701212	12"
AH701224	24"
AH701236	36"
AH701248	48"
AH701260	60"
AH701272	72"
AH701284	84"
AH701296	96"

ALUMINUM

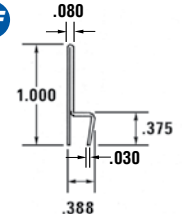
**CF**



TANIS PART NO.	OVERALL LENGTH
STH700012	12"
STH700024	24"
STH700036	36"
STH700048	48"
STH700060	60"
STH700072	72"
STH700084	84"
STH700096	96"

STAINLESS STEEL

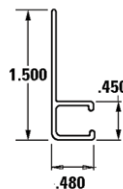
**CF**



TANIS PART NO.	OVERALL LENGTH
AH701612	12"
AH701624	24"
AH701636	36"
AH701648	48"
AH701660	60"
AH701672	72"
AH701684	84"
AH701696	96"

ALUMINUM

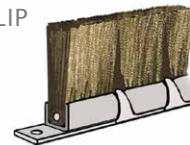
**CF**



### STEEL ALLIGATOR CLIP

TANIS PART NO.

AC7050



#7 aluminum holders have a thickness of .050"

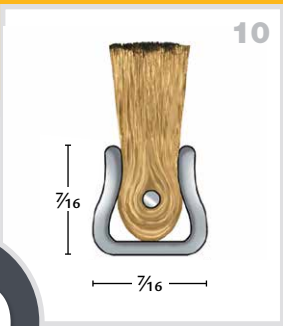
Mounting holes and slots  
can be machined into holders.



#

**10**

Nominal size.  
See page 36.



METAL BACK  
STRIP BRUSH  
HOLDERS

**Extruded Aluminum**

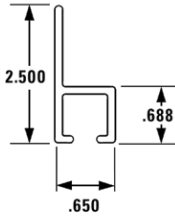


**CF** CLEAR ANODIZED FINISH **IN STOCK**

ALUMINUM

TANIS PART NO.	OVERALL LENGTH
AH100412	12"
AH100424	24"
AH100436	36"
AH100448	48"
AH100460	60"
AH100472	72"
AH100484	84"
AH100496	96"

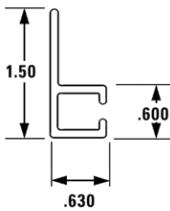
**CF**



ALUMINUM

AH100812	12"
AH100824	24"
AH100836	36"
AH100848	48"
AH100860	60"
AH100872	72"
AH100884	84"
AH100896	96"

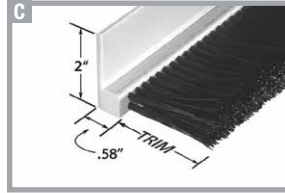
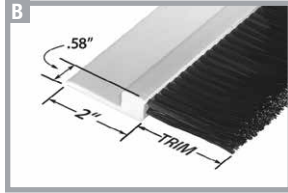
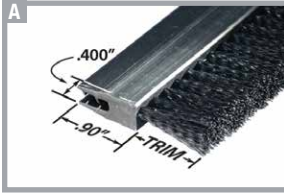
**CF**



#10 aluminum holders have a thickness of .060"

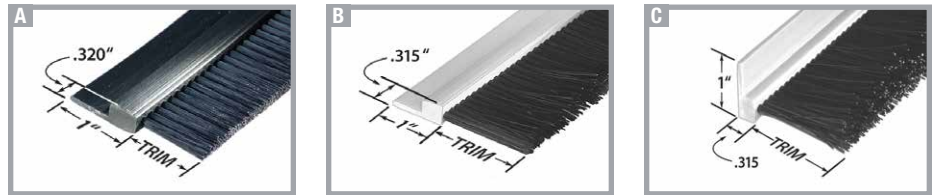


## Flexible and Rigid PVC Strip Brushes



TANIS PART NO.	TRIM LENGTH	OVERALL LENGTH	NUMBER OF ROWS	FILL MATERIAL
<b>A FLEXIBLE PVC – CLIP STYLE</b>				
FPVC121036	1"	36"	2	.008 Crimped Black Nylon
FPVC122036	2"	36"	2	.012 Crimped Black Nylon
FPVC123036	3"	36"	2	.020 Crimped Black Nylon
FPVC121072	1"	72"	2	.008 Crimped Black Nylon
FPVC122072	2"	72"	2	.012 Crimped Black Nylon
FPVC123072	3"	72"	2	.020 Crimped Black Nylon
<b>B RIGID PVC – h-PROFILE</b>				
RPVC231036	1"	36"	3	.008 Level Black Nylon
RPVC232036	2"	36"	3	.012 Level Black Nylon
RPVC233036	3"	36"	3	.020 Level Black Nylon
RPVC231072	1"	72"	3	.008 Level Black Nylon
RPVC232072	2"	72"	3	.012 Level Black Nylon
RPVC233072	3"	72"	3	.020 Level Black Nylon
<b>C RIGID PVC – 90 DEGREE PROFILE</b>				
RPVC331036	1"	36"	3	.008 Level Black Nylon
RPVC332036	2"	36"	3	.012 Level Black Nylon
RPVC333036	3"	36"	3	.020 Level Black Nylon
RPVC331072	1"	72"	3	.008 Level Black Nylon
RPVC332072	2"	72"	3	.012 Level Black Nylon
RPVC333072	3"	72"	3	.020 Level Black Nylon
<b>B RIGID PVC – h-PROFILE</b>				
RPVC731036	1"	36"	3	Horse Hair
RPVC732036	2"	36"	3	Horse Hair
RPVC733036	3"	36"	3	Horse Hair
RPVC731072	1"	72"	3	Horse Hair
RPVC732072	2"	72"	3	Horse Hair
RPVC733072	3"	72"	3	Horse Hair
<b>C RIGID PVC – 90 DEGREE PROFILE</b>				
RPVC831036	1"	36"	3	Horse Hair
RPVC832036	2"	36"	3	Horse Hair
RPVC833036	3"	36"	3	Horse Hair
RPVC831072	1"	72"	3	Horse Hair
RPVC832072	2"	72"	3	Horse Hair
RPVC833072	3"	72"	3	Horse Hair

## Flexible and Rigid PVC Strip Brushes

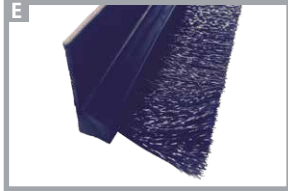
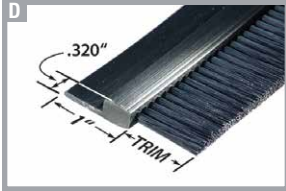


TANIS PART NO.	TRIM LENGTH	OVERALL LENGTH	NUMBER OF ROWS	FILL MATERIAL
<b>A FLEXIBLE PVC – h-PROFILE</b>				
FPVC141036	1"	36"	1	.008 Level Black Nylon
FPVC142036	2"	36"	1	.012 Level Black Nylon
FPVC143036	3"	36"	1	.020 Level Black Nylon
FPVC141072	1"	72"	1	.008 Level Black Nylon
FPVC142072	2"	72"	1	.012 Level Black Nylon
FPVC143072	3"	72"	1	.020 Level Black Nylon
<b>B RIGID PVC – h-PROFILE</b>				
RPVC211036	1"	36"	1	.008 Level Black Nylon
RPVC212036	2"	36"	1	.012 Level Black Nylon
RPVC213036	3"	36"	1	.020 Level Black Nylon
RPVC211072	1"	72"	1	.008 Level Black Nylon
RPVC212072	2"	72"	1	.012 Level Black Nylon
RPVC213072	3"	72"	1	.020 Level Black Nylon
<b>C RIGID PVC – 90 DEGREE PROFILE</b>				
RPVC311036	1"	36"	1	.008 Level Black Nylon
RPVC312036	2"	36"	1	.012 Level Black Nylon
RPVC313036	3"	36"	1	.020 Level Black Nylon
RPVC311072	1"	72"	1	.008 Level Black Nylon
RPVC312072	2"	72"	1	.012 Level Black Nylon
RPVC313072	3"	72"	1	.020 Level Black Nylon
<b>B RIGID PVC – h-PROFILE</b>				
RPVC711036	1"	36"	1	Horse Hair
RPVC712036	2"	36"	1	Horse Hair
RPVC713036	3"	36"	1	Horse Hair
RPVC711072	1"	72"	1	Horse Hair
RPVC712072	2"	72"	1	Horse Hair
RPVC713072	3"	72"	1	Horse Hair
<b>C RIGID PVC – 90 DEGREE PROFILE</b>				
RPVC811036	1"	36"	1	Horse Hair
RPVC812036	2"	36"	1	Horse Hair
RPVC813036	3"	36"	1	Horse Hair
RPVC811072	1"	72"	1	Horse Hair
RPVC812072	2"	72"	1	Horse Hair
RPVC813072	3"	72"	1	Horse Hair



# STRIP BRUSHES

## Flexible PVC Strip Brushes



TANIS PART NO.	TRIM LENGTH	OVERALL LENGTH	NUMBER OF ROWS	FILL MATERIAL
<b>D FLEXIBLE PVC – h-PROFILE</b>				
FPVC151036	1"	36"	2	.008 Crimped Black Nylon
FPVC151072	1"	72"	2	.008 Crimped Black Nylon
FPVC152036	2"	36"	2	.012 Crimped Black Nylon
FPVC152072	2"	72"	2	.012 Crimped Black Nylon
FPVC153036	3"	36"	2	.020 Crimped Black Nylon
FPVC153072	3"	72"	2	.020 Crimped Black Nylon
<b>E FLEXIBLE PVC – 90 DEGREE PROFILE</b>				
FPVC390136	1"	36"	2	.008 Crimped Black Nylon
FPVC390172	1"	72"	2	.008 Crimped Black Nylon
FPVC390236	2"	36"	2	.012 Crimped Black Nylon
FPVC390272	2"	72"	2	.012 Crimped Black Nylon
FPVC390336	3"	36"	2	.020 Crimped Black Nylon
FPVC390372	3"	72"	2	.020 Crimped Black Nylon



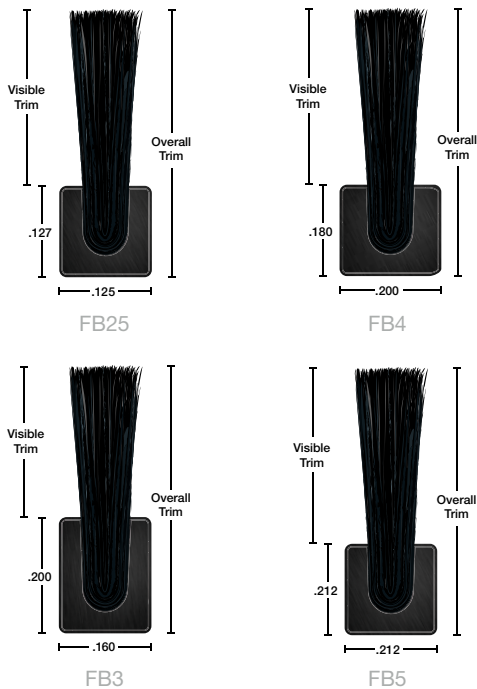
**UPDATED OFFERING**

## Fuze Flex™ Strip Brush

The Fuze Flex™ Strip Brush is the newest technology in brush seal. With exceptional flexibility, the brush contours to irregular surfaces, solving sealing challenges and allowing attachment to an incredibly diverse range of materials. This brush is made by fusing backing with filament for a seamless all-in-one tool. When needed, cut to length with heavy scissors or wire cutters. Non-corrosive.

TANIS PART NO.	BACKING SIZE	VISIBLE TRIM	OVERALL LENGTH	FILL MATERIAL
FB251100	.125" x .127"	1"	100'	.006 Level Black Polypropylene
FB252100	.125" x .127"	2"	100'	.006 Level Black Polypropylene
FB253100	.125" x .127"	3"	100'	.006 Level Black Polypropylene
FB410100	.200" x .180"	1"	100'	.010 Level Black Polypropylene
FB420100	.200" x .180"	2"	100'	.010 Level Black Polypropylene
FB430100	.200" x .180"	3"	100'	.012 Level Black Polypropylene
FB440100	.200" x .180"	4"	100'	.012 Level Black Polypropylene
FB450100	.200" x .180"	5"	100'	.012 Level Black Polypropylene
FB251100-N	.125" x .127"	1"	100'	.006 Level Black Nylon
FB252100-N	.125" x .127"	2"	100'	.006 Level Black Nylon
FB253100-N	.125" x .127"	3"	100'	.006 Level Black Nylon
FB410100-N	.200" x .180"	1"	100'	.010 Level Black Nylon
FB420100-N	.200" x .180"	2"	100'	.010 Level Black Nylon
FB430100-N	.200" x .180"	3"	100'	.012 Level Black Nylon
FB440100-N	.200" x .180"	4"	100'	.012 Level Black Nylon
FB450100-N	.200" x .180"	5"	100'	.012 Level Black Nylon

Other trim lengths, overall lengths, fill material and backing sizes are available upon request.



### APPLICATIONS

- Sealing Gaps
- Material Transporting
- Glass Processing
- Static Elimination

### INDUSTRIES

- Aerospace
- Automotive
- Agriculture
- Food Processing
- Packaging
- Material Handling
- Pharmaceutical
- Data Center/  
Cable Management
- And Many More

### BENEFITS

- Less Expensive than Traditional Metal Back Brushes
- Lightweight. Up to 40% Lighter than Metal Back Strip Brushes
- Lower Shipping Costs
- Chemical Resistant
- Malleable
- Metal Free and Won't Rust
- Easier to Store in Inventory Due to Flexible Design
- Easily Cut to Size with Scissors
- 100% Recyclable
- Full/Dense Brush Face







# STRIP BRUSHES

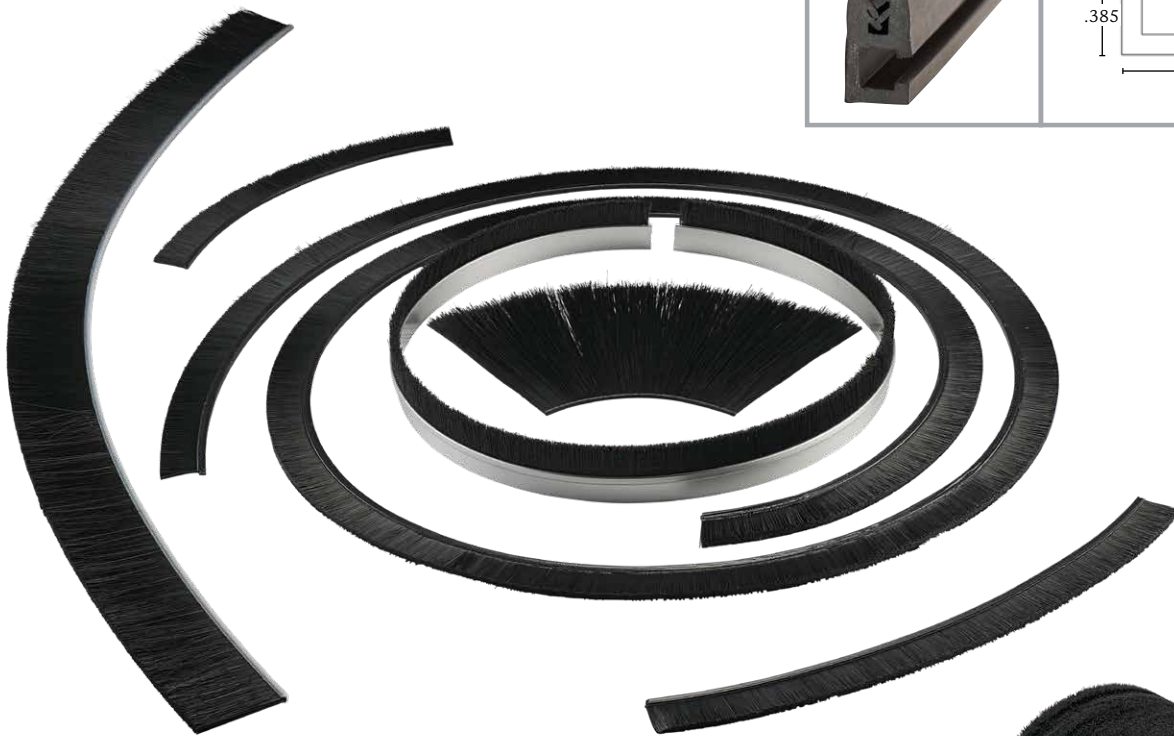
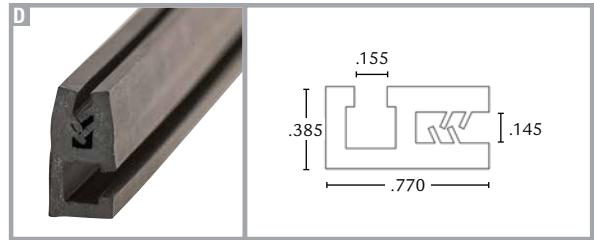
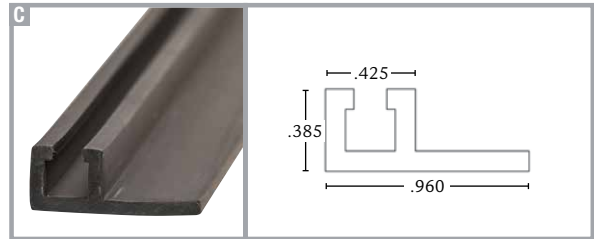
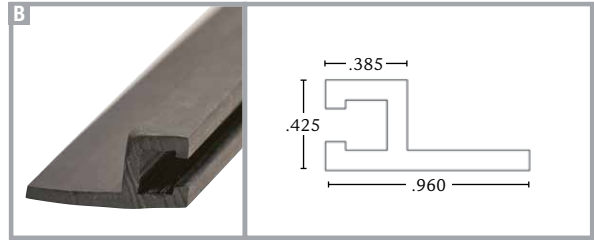
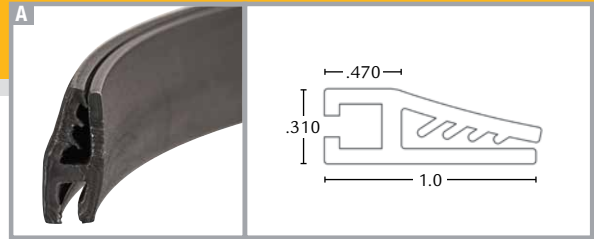
## Fuze Flex™ Strip Brush Holders

### FB25 Backing Holders

TANIS PART NO.	OVERALL LENGTH
A FPH250060	5'
A FPH250100	100'

### FB4 Backing Holders

TANIS PART NO.	OVERALL LENGTH	PROFILE
B FPH410060	5'	180°
B FPH410120	10'	180°
C FPH420060	5'	90°
C FPH420120	10'	90°
D FPH430060	5'	Clip 90°
D FPH430120	10'	Clip 90°



Lightweight cylinder brush with dense brush face available upon request.

# *Need a Custom Brush?*

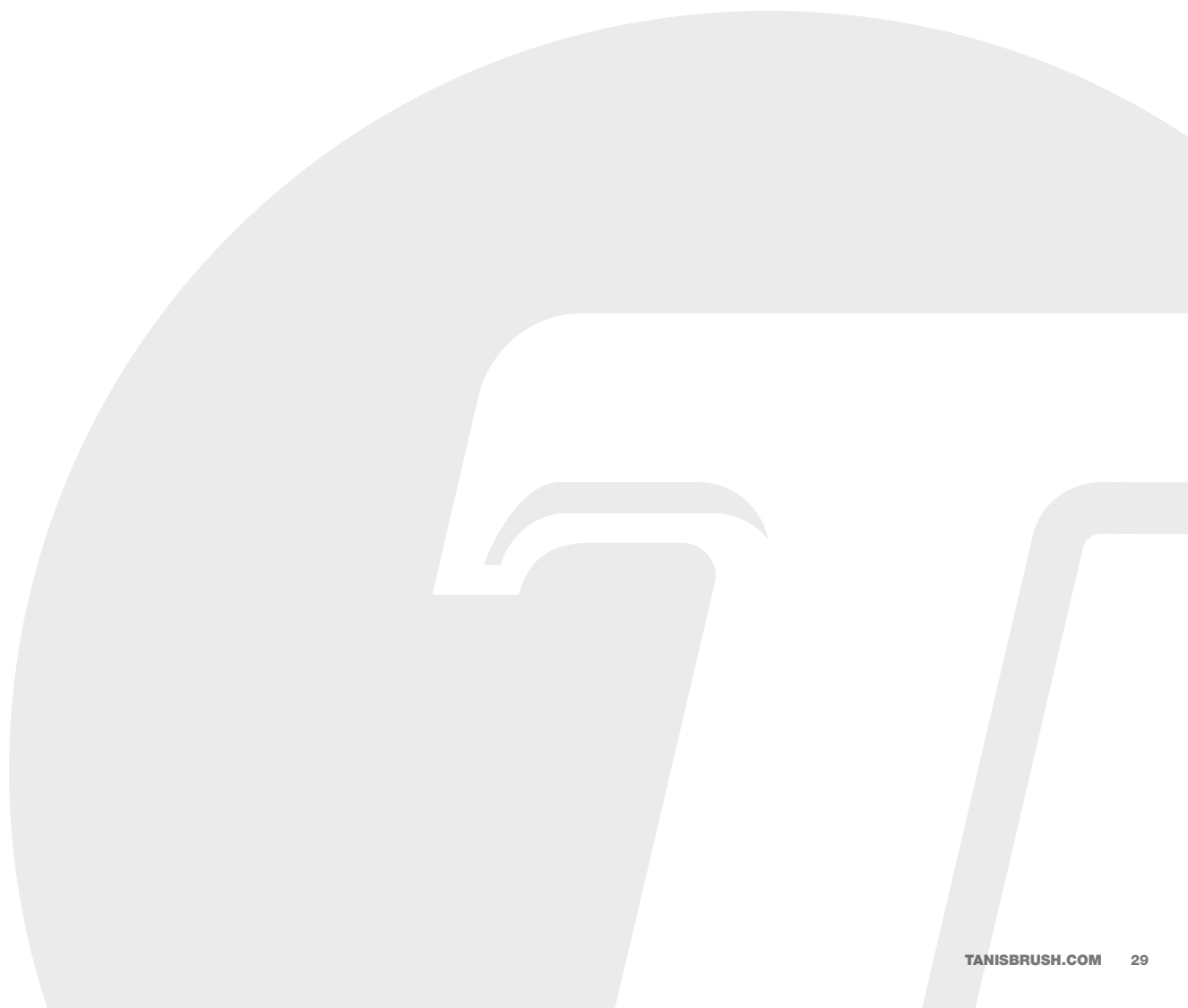
## **OUR DESIGN & ENGINEERING TEAM CAN HELP!**

**Our commitment to you:** To design and build brushes that can help fix an on-going problem with your operation or process. We've literally designed and built thousands of full custom and modified standard brushes for our customers, which include dozens of large and small OEMs to end users in the food service industry. This service is what separates us from other brush companies. Using the latest technologies, newest materials and our team of experienced engineers, we can design and make a brush that meets your expectations. Ranging from oversize to micro-size, industry specific colors, temperature performance, durability requirements or problem solving design, we've got you covered!

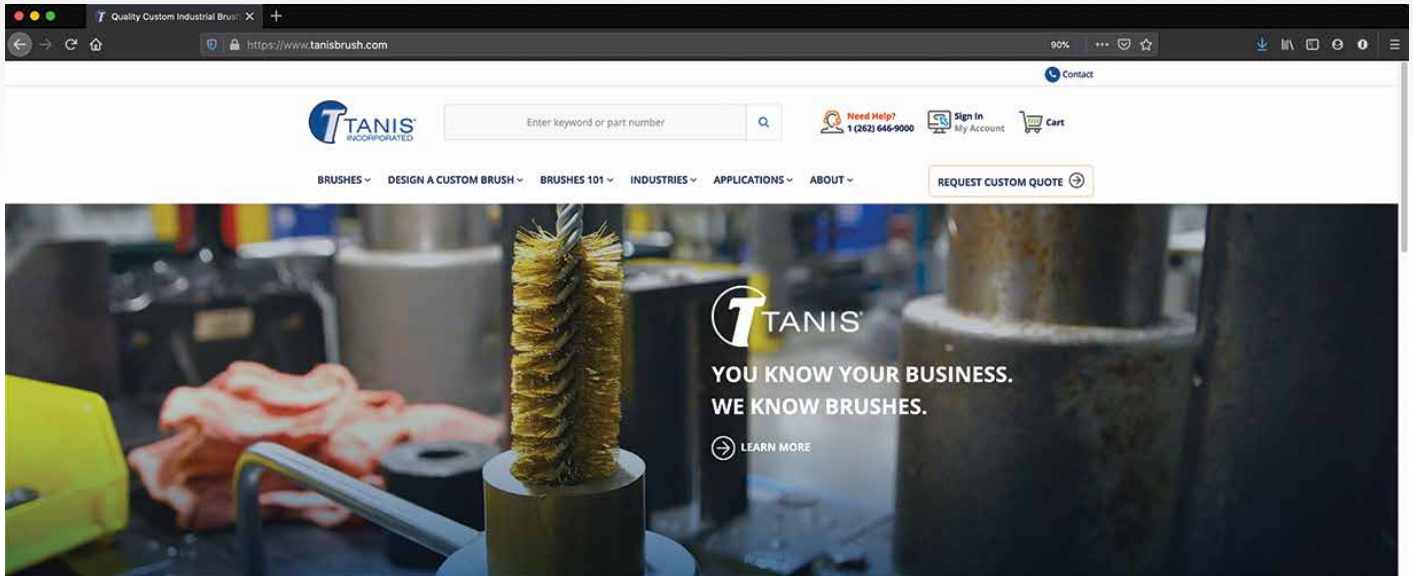


**Contact us today for a free estimate.**  
**(262) 646-9000 | [tanisbrush.com](http://tanisbrush.com)**

NOTES



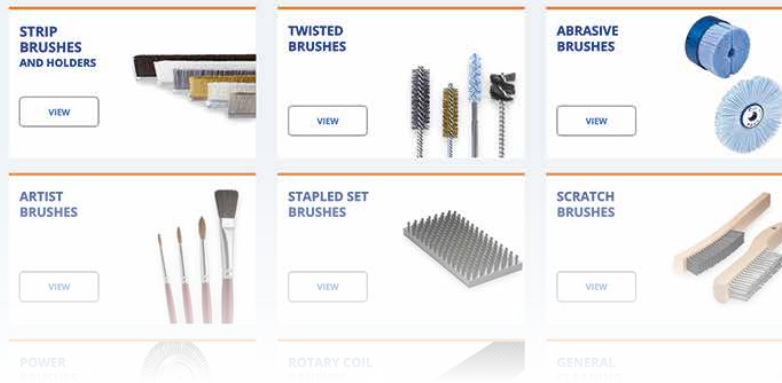
# Visit [www.tanisbrush.com](http://www.tanisbrush.com) to purchase online or complete RFQ forms.



Tanis Incorporated is a leading manufacturer of industrial brushes. We specialize in creating custom industrial brushes that match your needs exactly. We serve customers worldwide from OEMs and manufacturing operations to production processes and maintenance operations in many industries.

Since 1987, it has been our priority to provide our customers with the very best industrial brushes on the market. Tanis has been known for our vast selection of brush products, resourceful specialty design, engineering capabilities, and exceptional customer service. As a trusted leader within the industry we are happy to provide the insight that can only come from our expertise.

## FEATURED CATEGORIES



All information contained in this catalog was accurate at time of publishing. Information should be used as a reference. Tanis Incorporated reserves the right to change product specifications without notice. Contact Tanis for the latest product information.

**Always follow safety guidelines when using brush products.**

©2021 Tanis Incorporated. All rights reserved. CeramiX®, Tanis, Inc.® and the Flying T Logo are registered trademarks of Tanis, Inc. All trademarks are property of their respective owners.



## Terms of Purchase

---

**Payment:** Net 30 days credit to approved customers.  
Credit cards accepted:



**Freight:** Shipments are made F.O.B. Delafield, Wisconsin or Fond du Lac, Wisconsin based on inventory availability.

**Ordering:** Minimum order is \$100 net or subject to process and handling charge. Special brushes are quoted per order.

**Discounts:** Quantity pricing will be quoted separately.

**Prices:** All pricing subject to change without notice.

**Tax:** Orders subject to sales tax.

**Availability:** Items highlighted are normally carried in stock for prompt shipment. Items are subject to availability.

**Returns:** Returns will not be accepted without a **Return Goods Authorization** issued from Tanis, Inc.

Return goods handling charges will be applied to product ordered in error or no longer needed by the customer:

- 10% with a replacement order of equal value.
- 25% without a replacement order.



3660 Kettle Court East  
Delafield, WI 53018

**Customer Service: (800) 234-7002**

**Phone: (262) 646-9000**

**Fax: (262) 646-9005**

**Email: [sales@tanisinc.com](mailto:sales@tanisinc.com)**



***Engineering | Innovation | Customer Care***

**Customer Service** (800) 234-7002

**Ph** (262) 646-9000 **Fx** (262) 646-9005

**Email** [sales@tanisinc.com](mailto:sales@tanisinc.com)

3660 Kettle Court East • Delafield, WI 53018 • USA

**[tanisbrush.com](http://tanisbrush.com)**